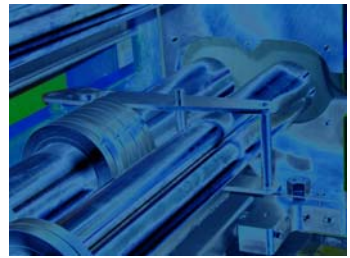
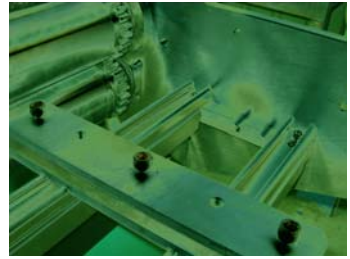
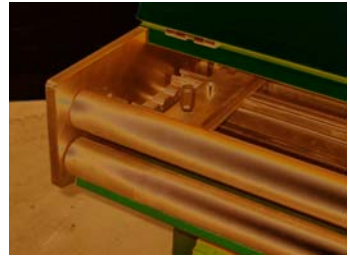




PREMIUM FOLDER PC INTERFACE

Software Update Manual



version: 2.0



Thank you for choosing ***SWI ENGINEERING*** to manufacture your ***FOLDER***.

We hope that this manual will be one of the reasons you choose to purchase your next machine from us in the future. Any suggestions which may lead to the increased quality of our instruction manual will be gratefully received.

To view the PDF software version of this manual, you will need Adobe® Acrobat® Reader. You can download this from the Adobe® web site:

www.adobe.com/products/acrobat/readstep2.html

Suggestions or notification of any errors in this manual can be forwarded via our e-mail:

[**info@swiengineering.com.au**](mailto:info@swiengineering.com.au)



Steps involved in updating your Folder Interface Software:

1. Prerequisites.

2. Note SETUP parameters.

3. Remove the existing installation.

4. Install the new version.

5. Copy back the previous settings.



1. Prerequisites.

This manual assumes that your machine is already running the SWI Premium Folder Interface software version V2.07 or later. If your machine is running an earlier version then you will need to contact SWI to arrange an update to the latest version of software.

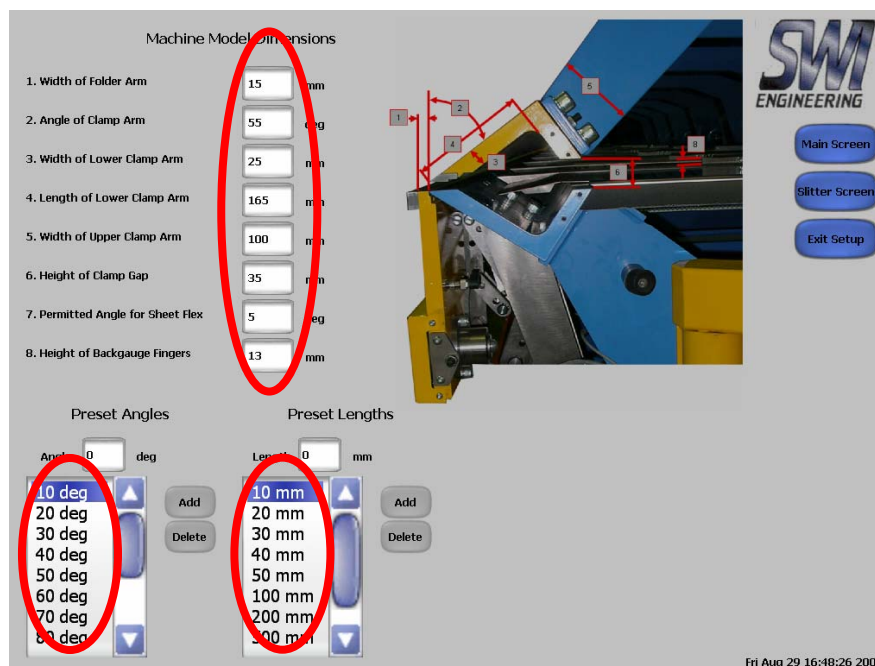
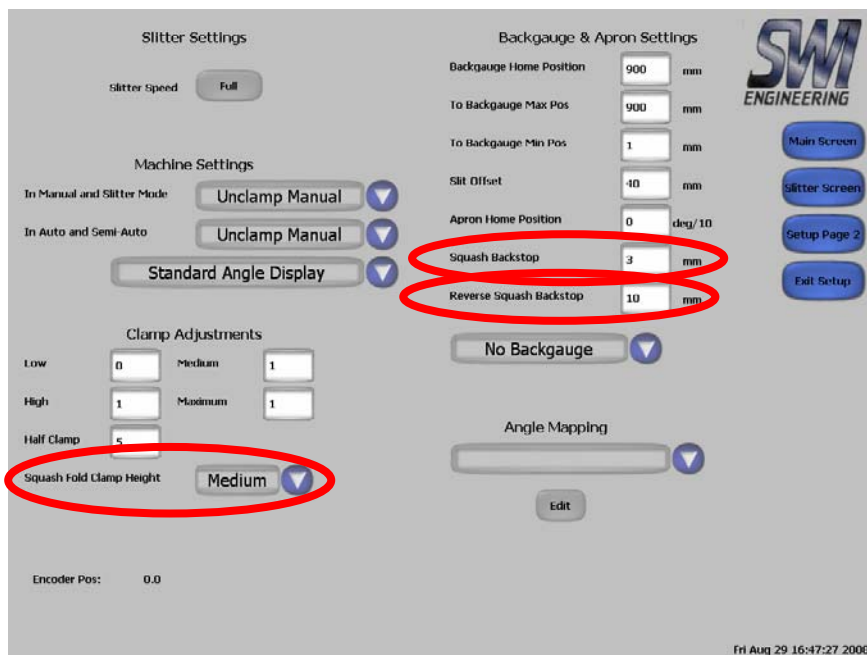
Your PC must also have a hardware lock (encoded USB Stick) that allows the software to communicate with the machine controller.

Note:

Provided that the new version of the software is installed into the same directory as the existing version, updating the SWI Folder software does not overwrite the existing “config.txt” file or the existing “library.txt”.

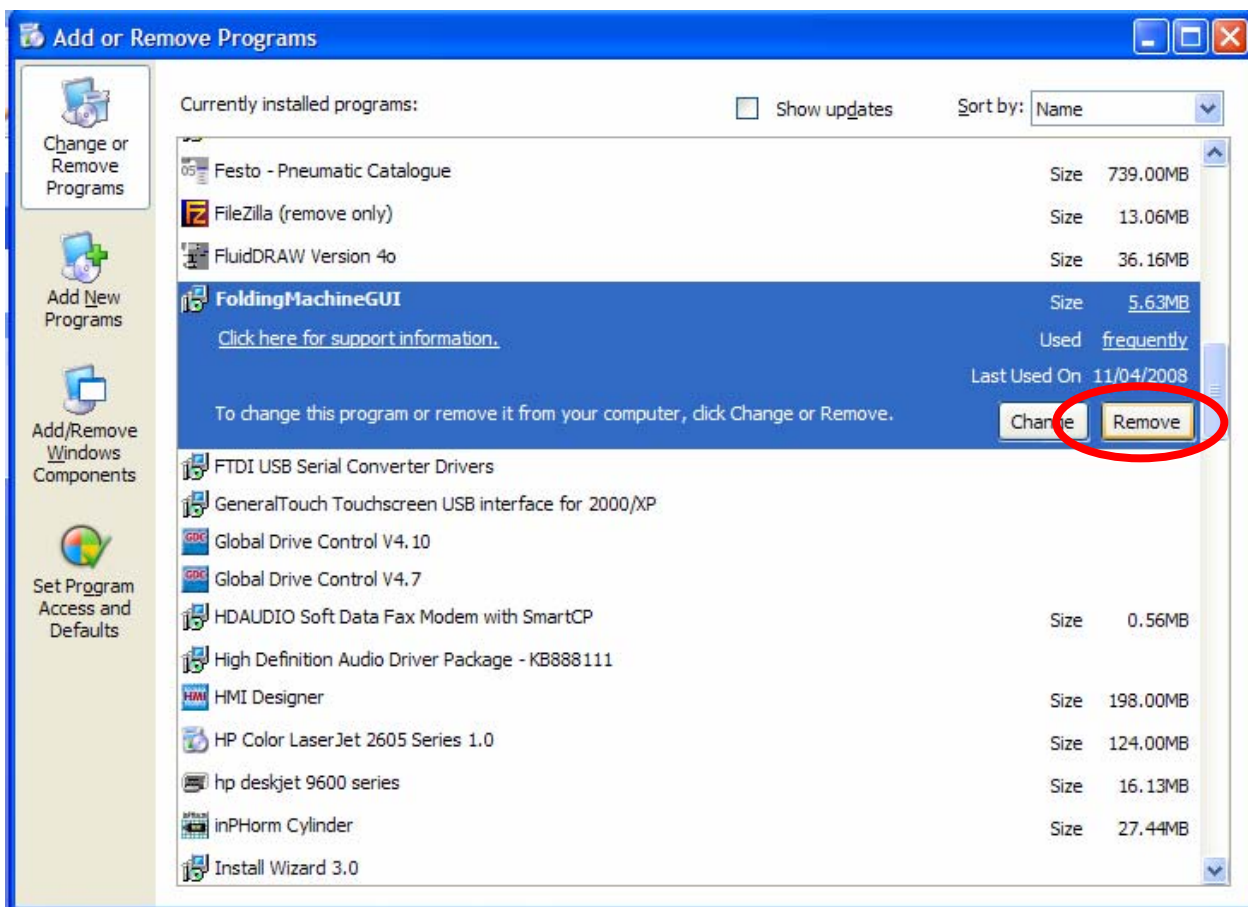
2. Note SETUP parameters.

The setup screens contain parameters which will be reset to default values when the new software is installed. The current settings should be noted so that they can be re-entered after the new installation is complete. Note down the following values:



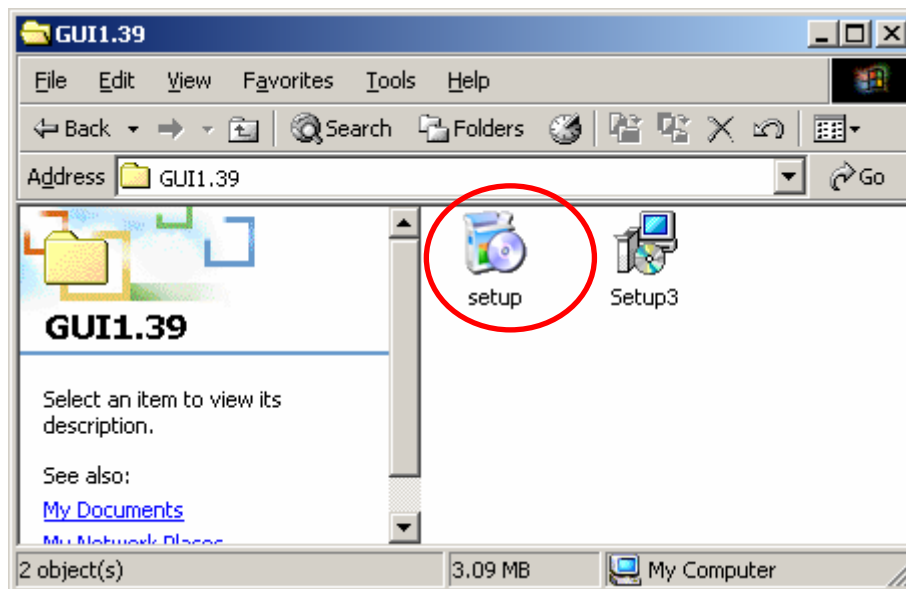
3. Remove the existing installation.

Using the Windows Control Panel, go to “Add/Remove Programs” and remove the existing installation as shown below.

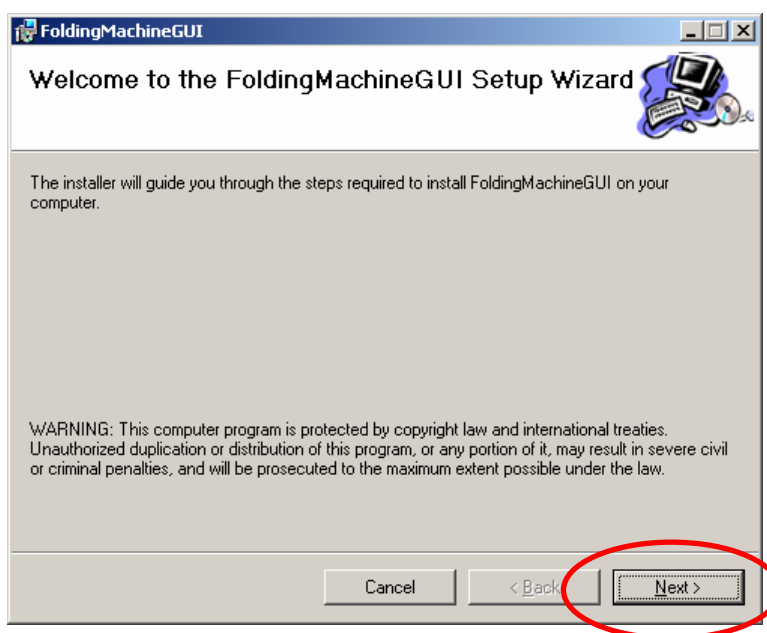


4. Install the new version.

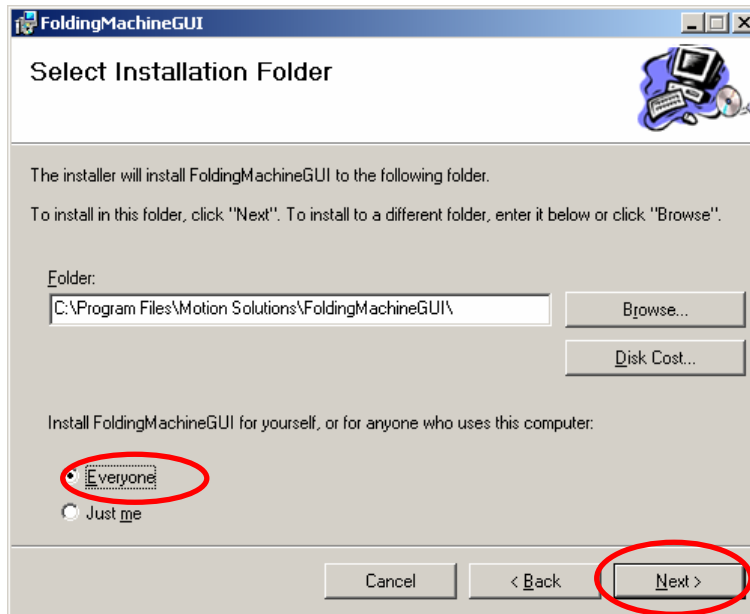
1. The latest version of the SWI Folder interface software can be downloaded at http://www.swiengineering.com.au/index_files/Downloads.htm. Once downloaded, open the zip file and double click the “setup” icon as shown below.



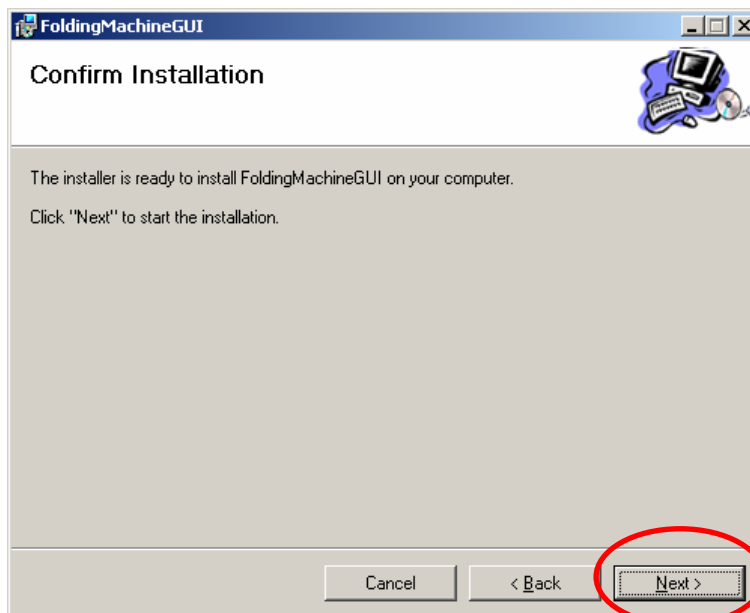
2. At the wizard window below, click Next.



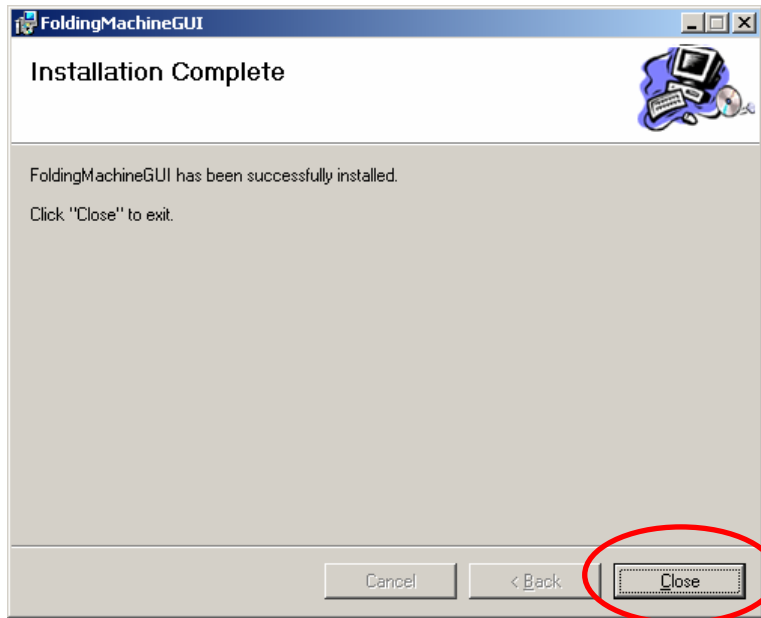
3. Select 'Everyone' then click Next.



4. Click Next.



5. Once the installation is complete click Close.





5. Copy back the previous settings.

1. Ensure the Folder Interface software shortcut is on the desktop.
2. Re-set any settings from the SETUP screens that may have been altered from the default values.